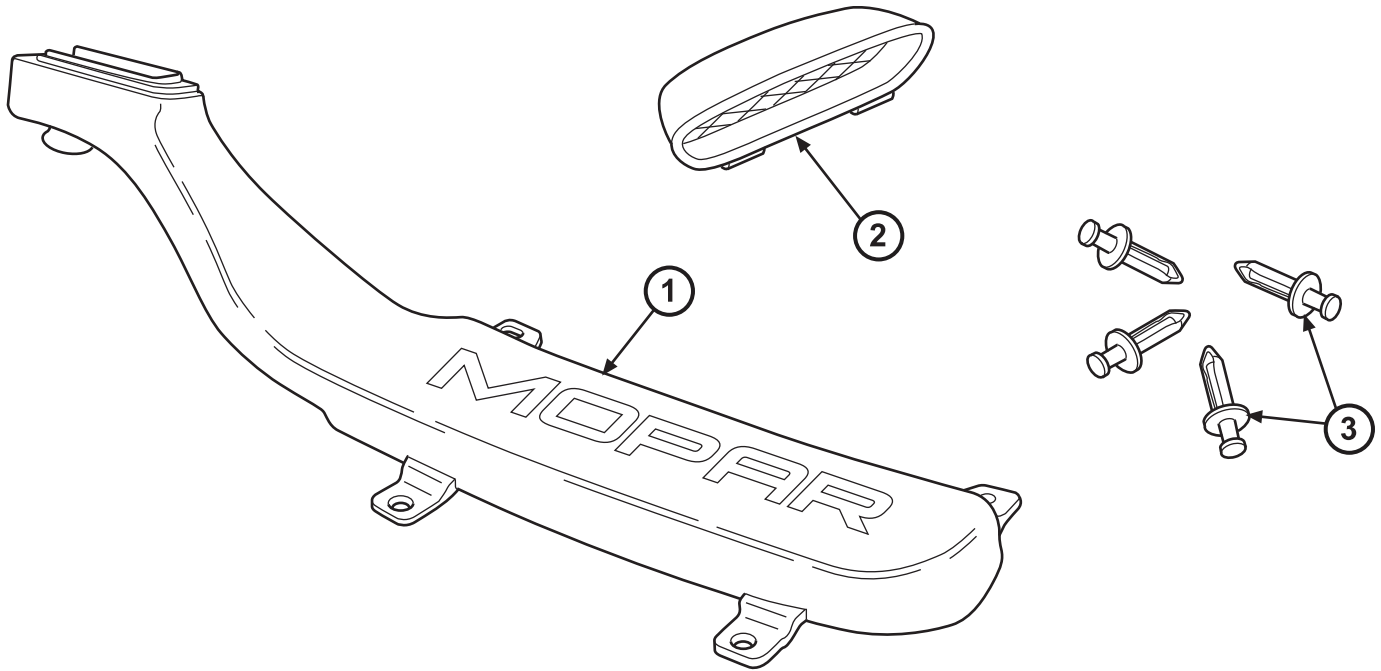




DODGE DART

RAM AIR KIT

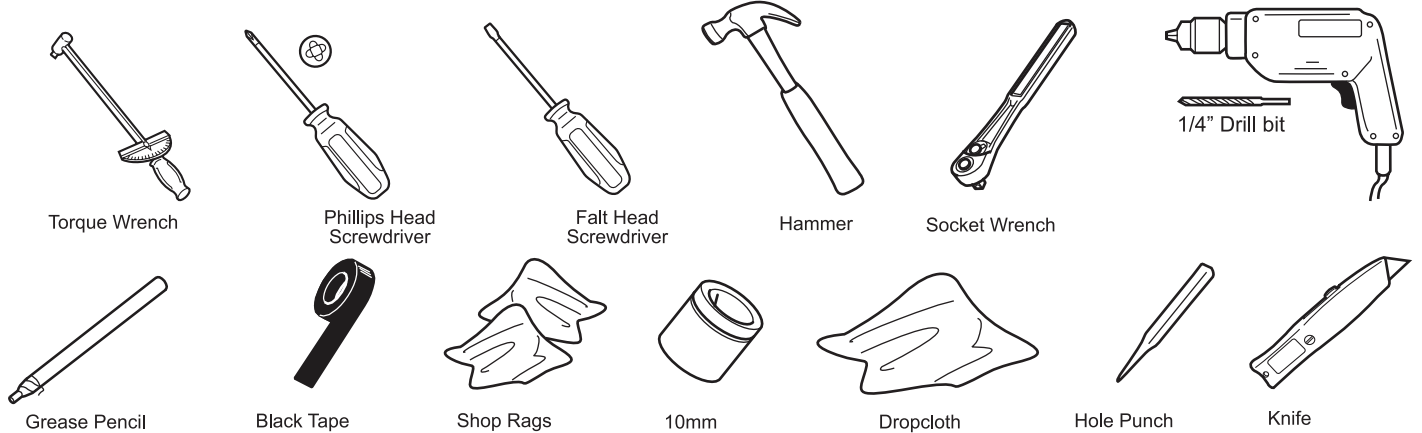
KIT ITEMS



PARTS LIST

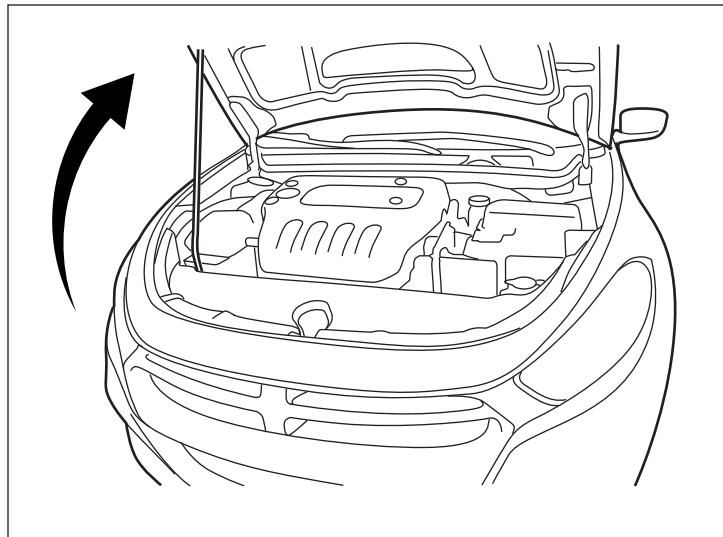
Callout	Description	Parts	Quantity
1	Ram Air Scoop	Supplied in kit	1
2	Open Hood Bezel	Supplied in kit	1
3	Push Pin	Supplied in kit	6

TOOLS REQUIRED



PROCEDURAL STEPS

1. Open engine hood and prop open.

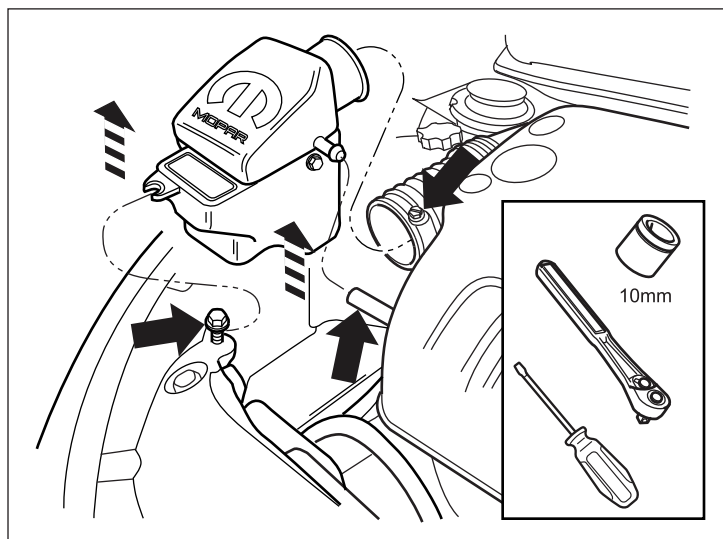


NOTE: Use of this ram air scoop requires using a Mopar cold air intake kit available at your local dealer.

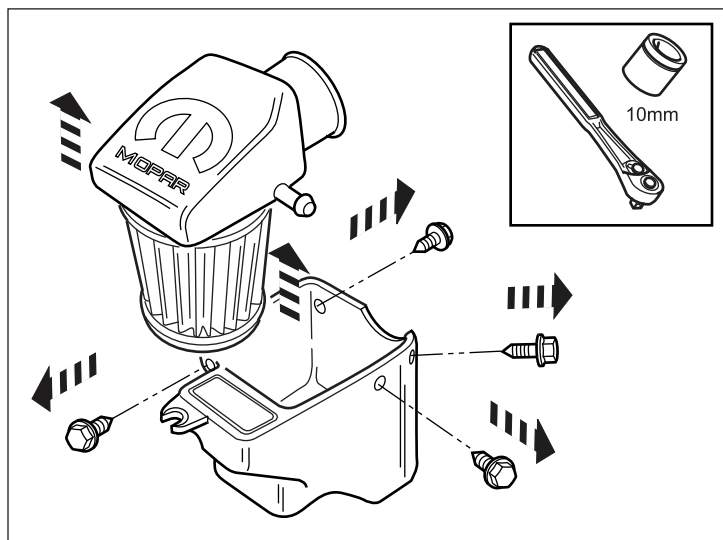
NOTE: These instructions illustrate a 2.4L engine. For 1.4L engine and complete airbox removal and install instructions please reference you Mopar Cold Air Intake installation instructions.

2. Loosen and disconnect all hoses and couplers connecting to your Mopar airbox. Loosen and remove 10mm bolt holding front of airbox. Save for reinstallation.

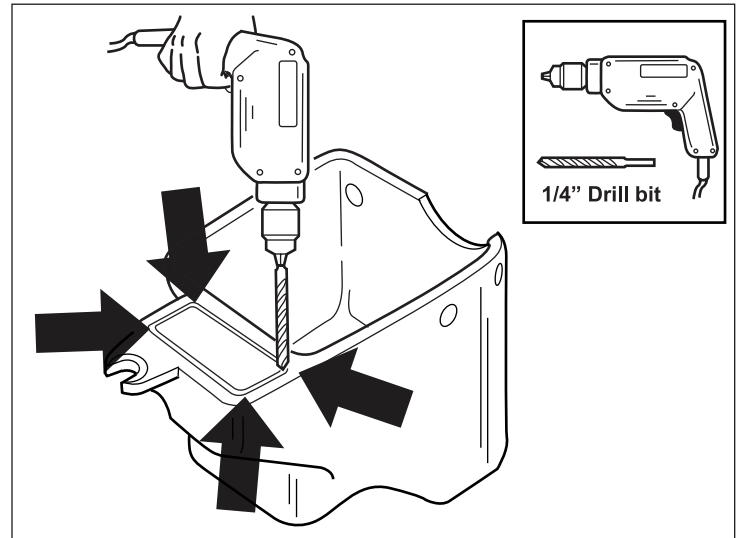
Remove airbox by pulling straight up. Move airbox to a workbench or tabletop.



3. Loosen four M6 bolts and remove airbox cover using a 10mm socket, save for reinstallation.



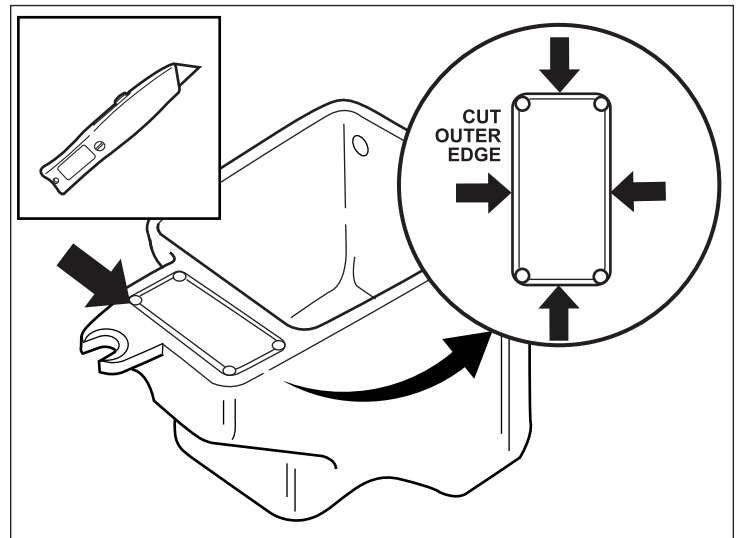
4. Using a 1/4" drill bit, drill a hole at each corner of airbox cut away cover.



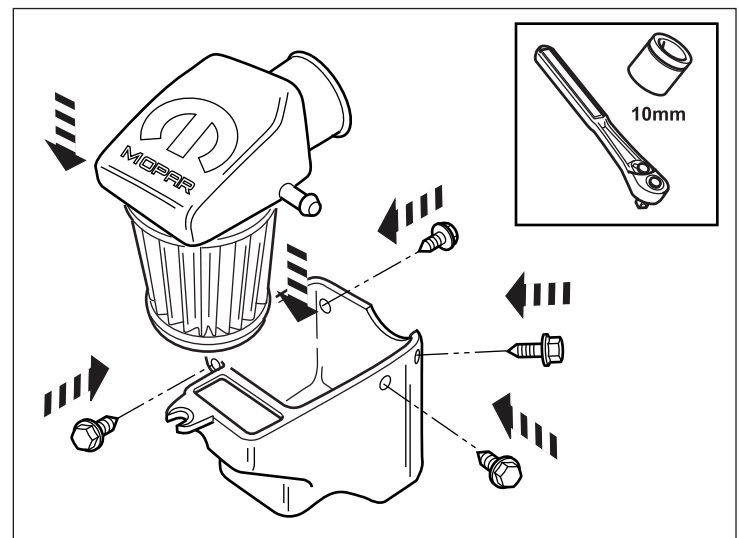
NOTE: When cutting out airbox access cover, ensure you cut on the outer edge of scribe marks.

A cut-off wheel, hot knife, or other tool may be used to cut out access cover.

5. Cut out airbox access cover with a utility knife. Discard cut out. Vacuum any excess shavings from inside of airbox before reassembling.

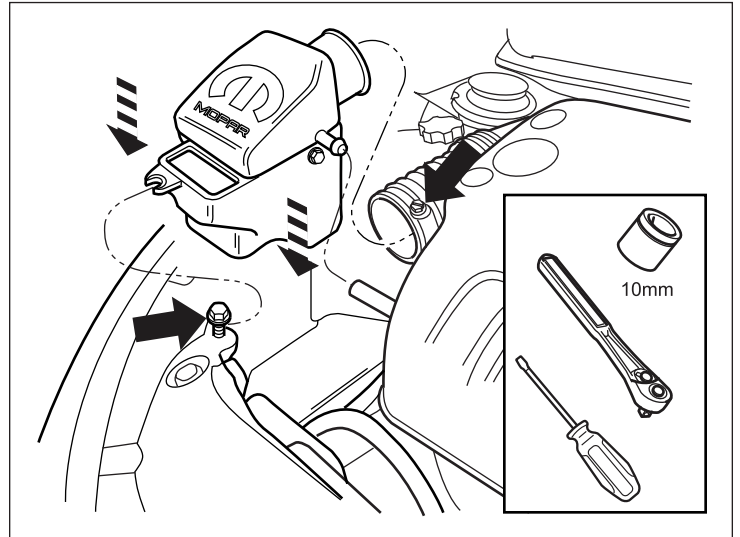


6. Install airbox cover and tighten four M6 bolts. Torque to 3.5 N.m (31 in-lbs).

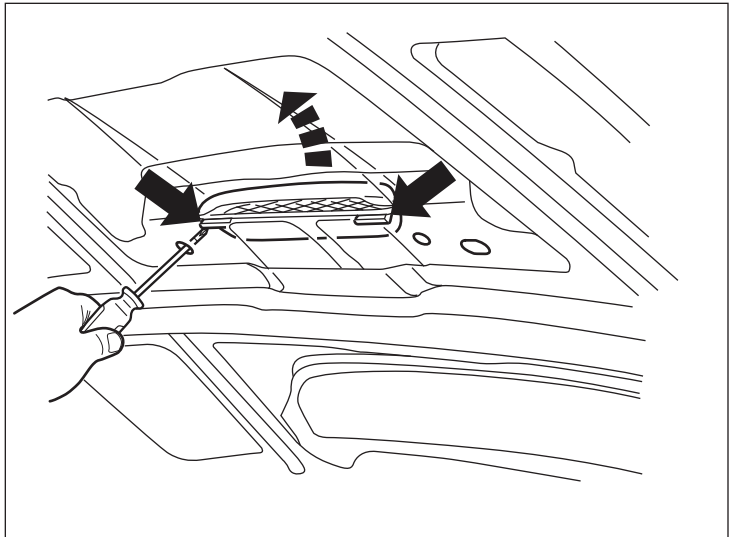


7. Install airbox by reversing step 2.

Re-connect all hoses and tighten any hose clamps using a flat head screwdriver. Install airbox mounting bolt with a 10mm socket. Torque to 7 N.m (62 in-lbs).



8. Using a phillips screwdriver disengage two tabs through access holes and, pry original hood vent. Discard hood vent.

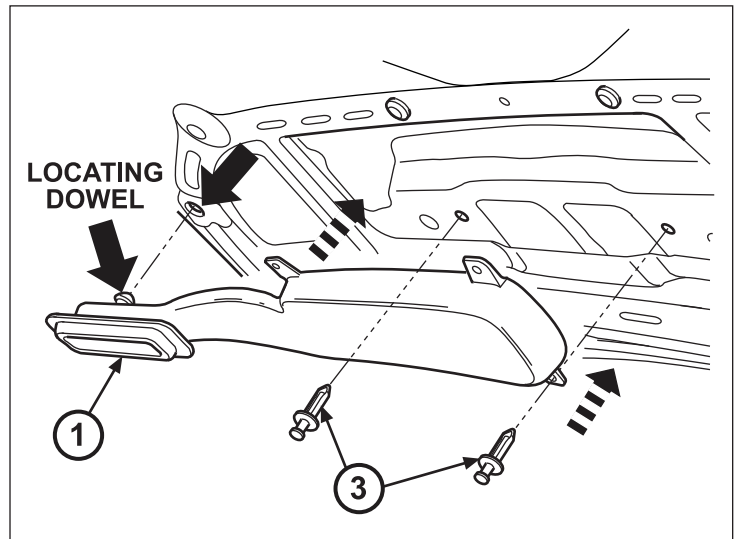


9. Cover entire engine with dropcloth or suitable material to keep engine clean of all working debris during assembly procedures.

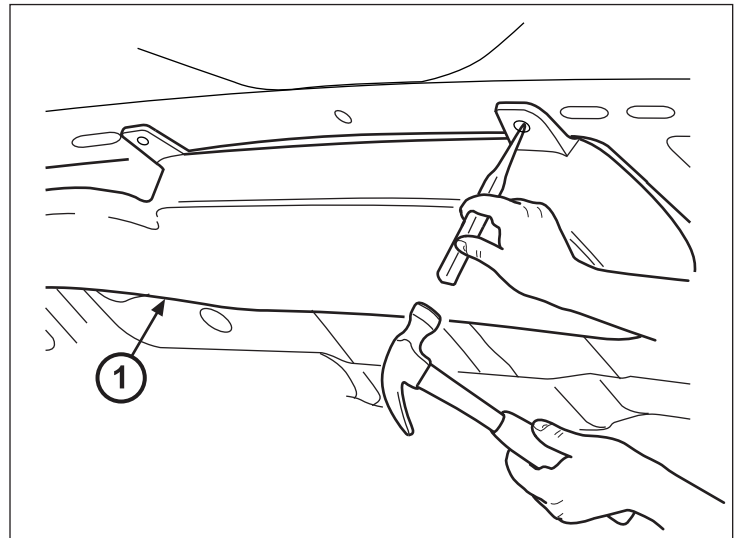


10. Install Ram Air Scoop tunnel (1), two push pins (3). Ensure that locating dowel fits securely in place to the hood.

NOTE: 2 extra push pins are included in this kit.

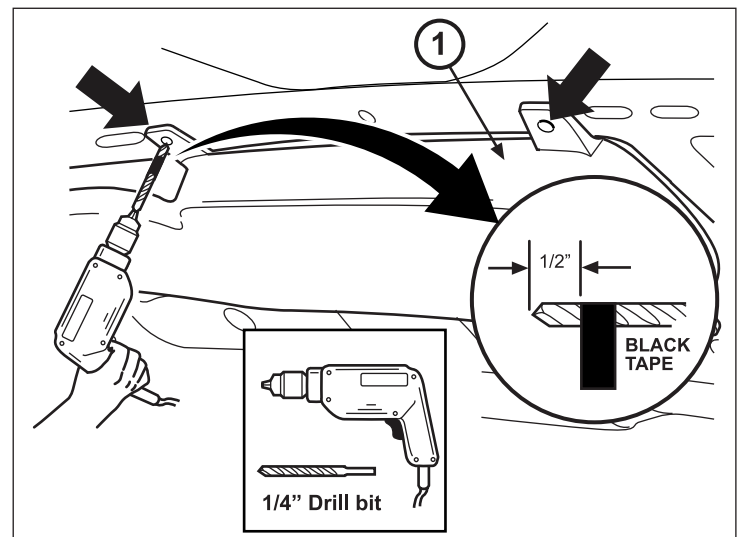


11. Use Ram Air Scoop (1) to locate mounting holes. Using a hammer and hole punch, punch a starter hole in the frame rail in each Ram Air Scoop mounting hole for drilling final mounting holes.

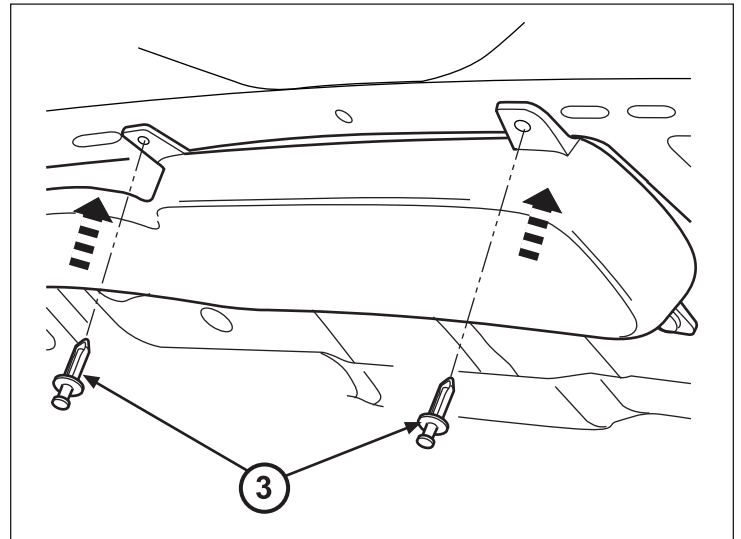


CAUTION: When drilling mounting holes into the aluminum hood, ensure that you mark the drill bit first with black tape exactly 1/2" down from the tip to ensure that drill bit does not penetrate hood surface.

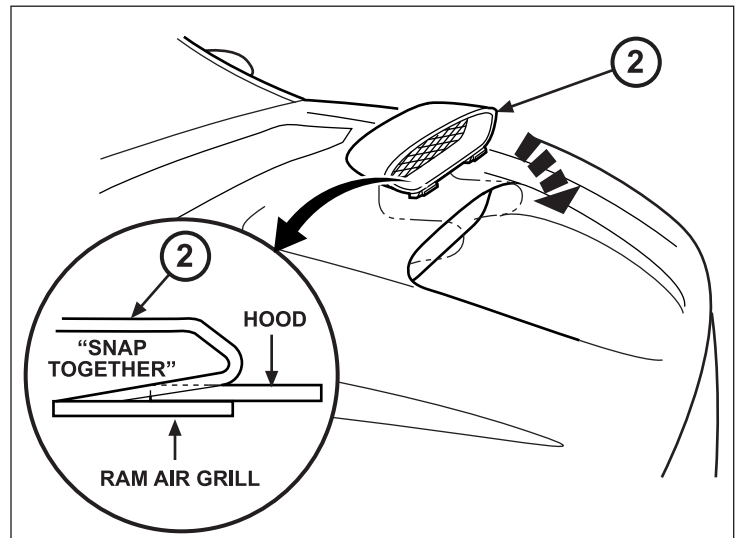
12. Drill mounting holes at punch point with a 1/4" drill bit on left and right sides.



13. Install two push pins (3).



14. Install new Ram Air grill (2) into hood, back side in first rocking back and forth until a click is heard on each side. This will ensure a secure fit for the Ram Air grill.



15. Remove dropcloth and vacuum out any shavings or debris with a shop vac.

Close the hood.

